



HPE6-A45^{Q&As}

Implementing Aruba Campus Switching solutions

Pass HP HPE6-A45 Exam with 100% Guarantee

Free Download Real Questions & Answers **PDF** and **VCE** file from:

<https://www.lead4pass.com/hpe6-a45.html>

100% Passing Guarantee
100% Money Back Assurance

Following Questions and Answers are all new published by HP Official Exam Center

- ⚙ **Instant Download** After Purchase
- ⚙ **100% Money Back** Guarantee
- ⚙ **365 Days** Free Update
- ⚙ **800,000+** Satisfied Customers





QUESTION 1

Which potential security issue does the captive portal URL hash key on an AOS-Switch help to prevent?

- A. unauthenticated guests to receive access before they log in to the captive portal
- B. unauthorized users to read the captive portal redirect URL in the AOS-Switch config
- C. users to change values in the URL that directs them to the captive portal
- D. hackers to eavesdrop on the RADIUS messages sent to ClearPass

Correct Answer: C

QUESTION 2

A network uses MSTP and has AOS-Switches at the access layer. The company wants edge ports on the access layer switches to meet these criteria:

They prevent all rogue switches that run STP, RSTP, or MSTP from connecting to the network.

If a rogue switch connects and is then replaced by a proper endpoint, the port recovers automatically without IT staff involvement.

How should the network administrator set up the edge ports to meet these requirements?

- A. Enable loop protection with a timeout period.
- B. Enable BPDU filtering.
- C. Enable both root guard and BPDU protection.
- D. Enable BPDU protection with a timeout period.

Correct Answer: D

QUESTION 3

AOS-Switches authenticate guests to ClearPass with captive portal. An administrator notices that some guests are unable to reach the captive portal page. What will resolve this issue?

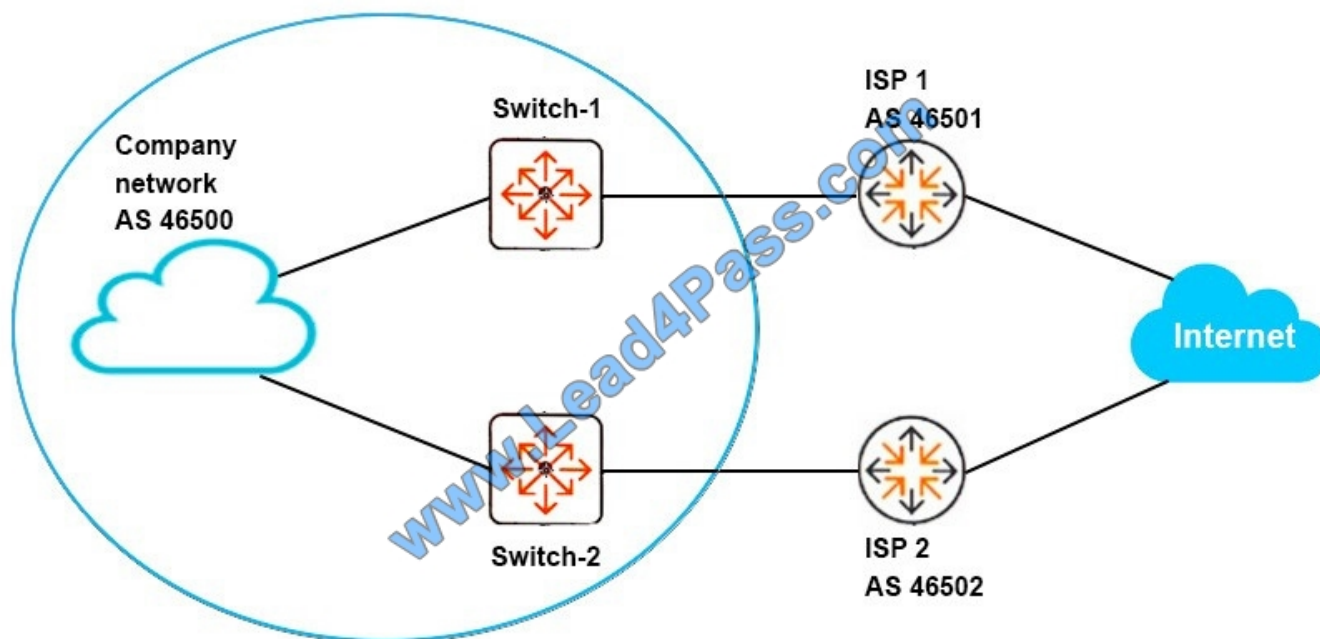
- A. Permit DNS on the ClearPass Portal
- B. Permit DHCP on the ClearPass Portal.
- C. Permit HTTP or HTTPS on the ClearPass Portal.
- D. Permit Allow All MAC-Auth on the ClearPass Portal.



Correct Answer: A

QUESTION 4

Refer to the exhibit.



Switch-1 and Switch-2 are AOS-Switches, which are iBGP peers. ISP 1 and ISP 2 advertise some routes to the same Internet destinations. Switch-1 and Switch-2 must select between these routes based on AS path length. What is required for Switch-1 and Switch-2?

- A. iBGP synchronization enabled
- B. Multihop enabled for the connection to the iBGP neighbor
- C. ECMP disabled for BGP
- D. eBGP and iBGP administrative distance set to the same value

Correct Answer: D

QUESTION 5

Refer to the exhibits. Exhibit 1

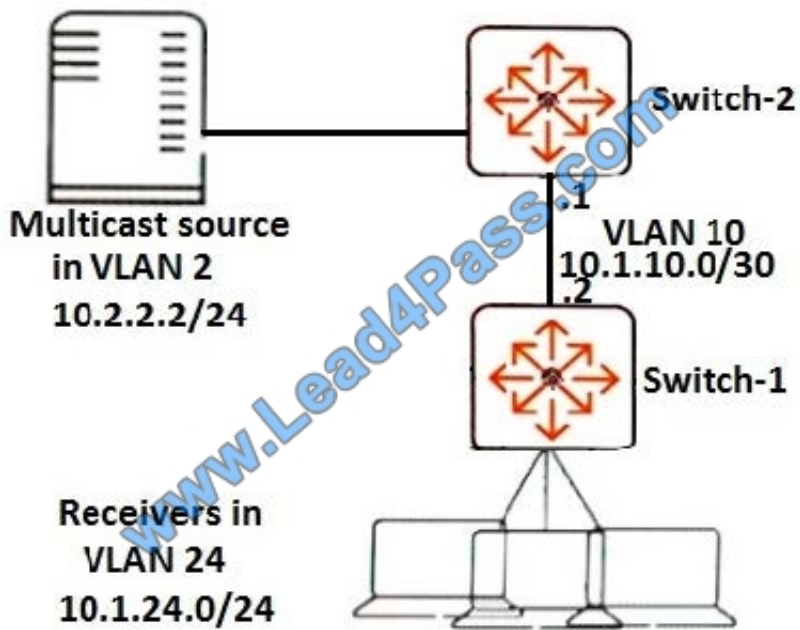


Exhibit 2 A network administrator sets up PIM-DM to route traffic from the multicast source to clients in VLAN 24. The server begins to forward multicasts, and the clients are set up to receive them. However, the multicasts do not reach the clients. Based on the output, what should the administrator verify?



Switch-1# show ip pim pending
Join Pending

Switch-1# show ip mroute
IP Multicast Route Entries
Total number of entries : 0

Group Address	Source Address	Neighbor	VLAN
---------------	----------------	----------	------

Switch-2# show ip pim mroute 239.1.1.1 10.2.2.2

IP Multicast Route Entry

Group Address : 239.1.1.1

Source Address : 10.2.2.2

Neighbor : 10.2.2.2

VLAN : 2

Up Time (sec) : 216

Expire Time (sec) : 285

Multicast Routing Protocol : PIM-DM

Unicast Routing Protocol : connected

<output omitted>

Downstream Interfaces

VLAN	State	Up Time (sec)	Expire Time (sec)
10	pruned	216	174

- A. that VLAN 24 on Switch-1 runs both IGMP and PIM-DM
- B. that Switch-2 has PIM-DM enabled on VLAN 10
- C. that state refreshes are enabled on Switch-2
- D. that Switch-1 has selected Switch-2 as its RP for 239.1.1.1

Correct Answer: B

QUESTION 6

A network administrator needs to control traffic based on TCP or UDP application, as well as IP protocol, such as GRE or ICMP. What should the administrator configure for this purpose?

- A. a standard IP ACL and an extended MAC ACL only
- B. both a standard IP ACL and an extended MAC ACL
- C. an extended IP ACL only
- D. both a standard IP ACL and a standard MAC ACL

Correct Answer: C

QUESTION 7

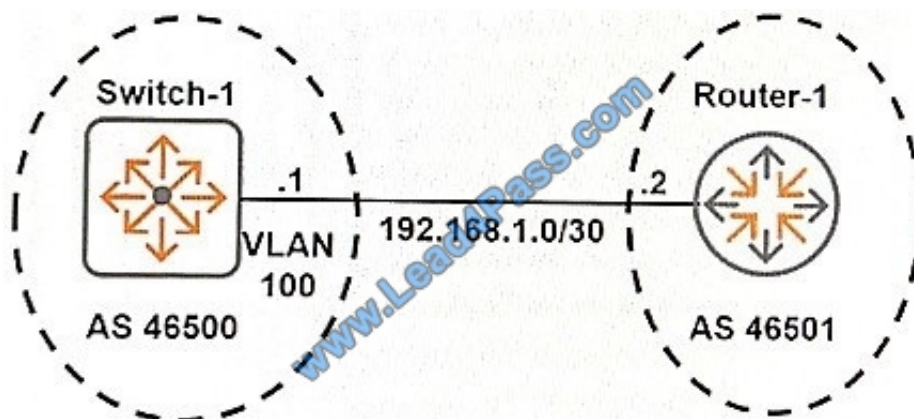
A network administrator needs to control traffic based on Ethertype and Class of Service. What should the administrator configure for this purpose?

- A. both a standard IP ACL and a standard MAC ACL
- B. both a standard IP ACL and an extended MAC ACL
- C. an extended IP ACL only
- D. an extended MAC ACL only

Correct Answer: D

QUESTION 8

Refer to the exhibit.



Switch-1 runs BGP. What should the network administrator do to permit Switch-1 to establish a neighbor relationship with Router-1?

- A. Configure 192.168.1.2 as a neighbor manually within the BGP context.
- B. Specify 192.168.1.0/30 with the network command in the BGP context.
- C. Enable BGP on VLAN 100.
- D. Set the BGP AS number to 46501.

Correct Answer: A

QUESTION 9

A company wants to implement 802.1X authentication to authenticate client devices on AOS-Switch ports. The company has a RADIUS server that uses PEAP MSCHAP-v2 for the authentication method.

What is one task administrators should complete before they implement the plan?

- A. Set up an isolated VLAN in the network for the 802.1X communications.
- B. Install personal certificates on client devices.
- C. Configure DHCP services on the AOS-Switches for pre-authenticated clients.
- D. Ensure client devices trust the RADIUS server certificate.

Correct Answer: D

QUESTION 10

Refer to the exhibit.

```
radius-server key password
radius-server host 10.1.10.10 dyn-authorization
radius-server host 10.1.10.11 dyn-authorization
```

AOS-Switches will enforce 802.1X authentication on edge ports. The company has two RADIUS servers, which are meant to provide redundancy and load sharing of requests. The exhibit shows the planned RADIUS setting to deploy to the switches.

Which adjustment to the plan should administrators make in order to meet the customers' requirements?

- A. Remove the dynamic authorization setting for both RADIUS servers.
- B. Specify a different RADIUS dynamic authorization port for each of the RADIUS servers.
- C. Specify one server on half of the switches and the other server on the other half of the switches.
- D. Change the order in which the RADIUS servers are specified on half of the switches.

Correct Answer: D

QUESTION 11

Network administrators need to configure a BGP neighbor on an AOS-Switch. What defines the neighbor as an iBGP neighbor?

- A. It has BGP synchronization enabled.

- B. It has an AS number in the range of 64512 to 64535.
- C. Its update source is set to a private company IP address.
- D. Its remote-AS is the same as the AOS-Switch BGP AS.

Correct Answer: D

QUESTION 12

A network administrator wants to use Aruba AirWave to audit an AOS-Switch configuration. What is one requirement?

- A. The switch defines the AirWave IP address in its zero touch provisioning (ZTP) profile.
- B. The switch specifies the AirWave IP address for the RADIUS server used for Telnet and SSH authentication.
- C. The switch is authorized in AirWave, which has the correct credentials to log in as a CLI manager.
- D. The switch is set to Manage Read-Write mode in AirWave but is not set to Monitor Only + Firmware Updates.

Correct Answer: B

QUESTION 13

Refer to the exhibits Exhibit 1

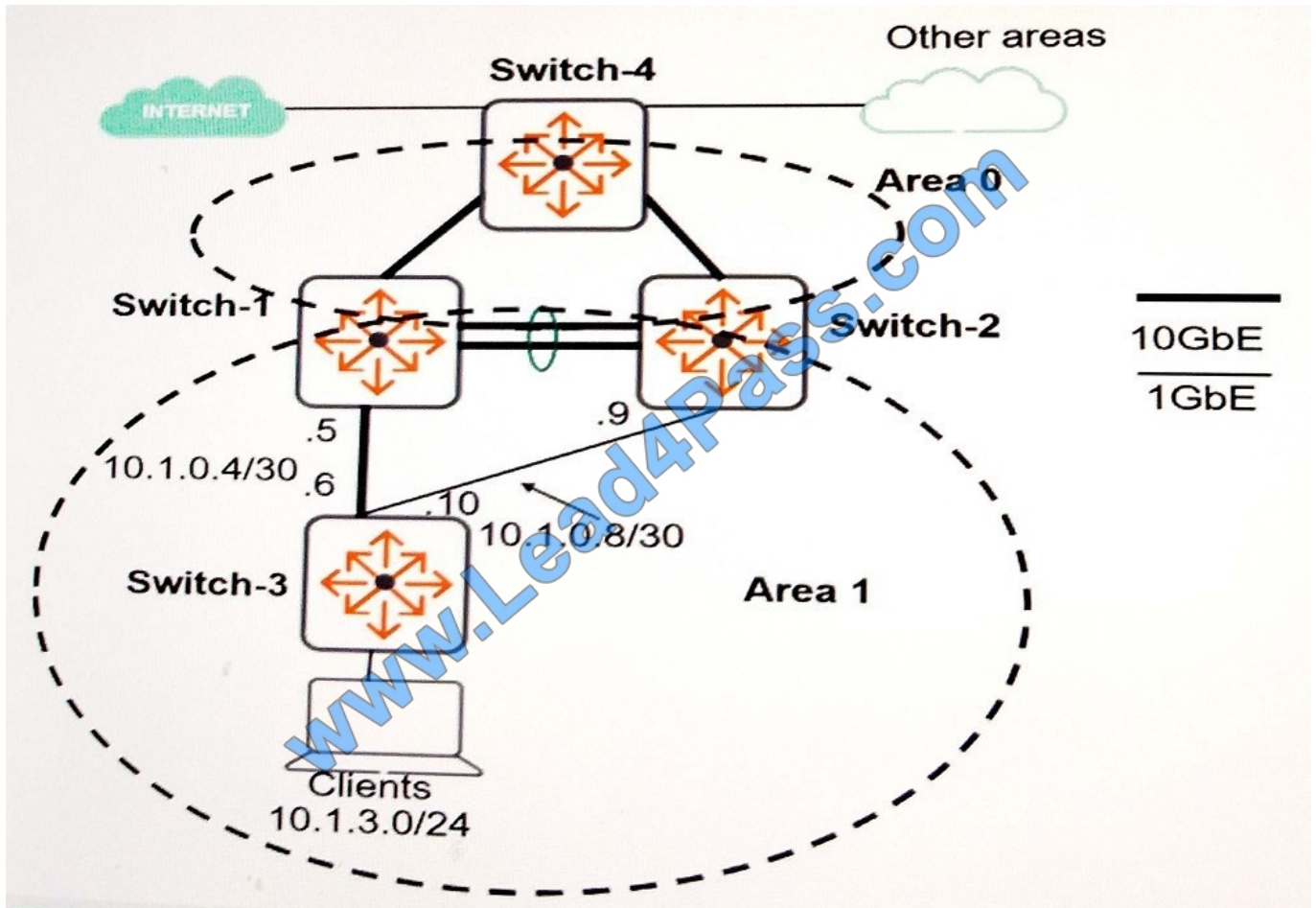


Exhibit 2



```
Switch-1 partial running-config
router ospf
 area backbone
 area 0.0.0.1 stub 1 no-summary

Switch-2 partial running-config
router ospf
 area backbone
 area 0.0.0.1 stub 1 no-summary

Switch-3 partial running-config
vlan 104
 ip address 10.1.0.6 255.255.255.252
 ip ospf area 0.0.0.1
 untagged a24
vlan 108
 ip address 10.1.0.10 255.255.255.252
 ip ospf area 0.0.0.1
 untagged a1
router ospf
 area 0.0.0.1 stub 1
```

Both Switch-1 and Switch-2 have an OSPF inter-area route to 10.2.0.0/16 with metric 10 in their IP routing table. Switch-3 has the default setting for ECMP. Based on the exhibits, what should the Switch-3 routing table display if the network operates as normal?

- A. no route to 10.2.0.0/16
- B. two routes to 10.2.0.0/16 through both 10.1.0.1 and 10.1.0.5
- C. a route to 10.2.0.0/16 through 10.1.0.5
- D. a route to 10.2.0.0/16 through 10.1.0.1

Correct Answer: A

[HPE6-A45 PDF Dumps](#)

[HPE6-A45 Practice Test](#)

[HPE6-A45 Exam Questions](#)



To Read the [Whole Q&As](#), please purchase the [Complete Version](#) from [Our website](#).

Try our product !

100% Guaranteed Success

100% Money Back Guarantee

365 Days Free Update

Instant Download After Purchase

24x7 Customer Support

Average 99.9% Success Rate

More than 800,000 Satisfied Customers Worldwide

Multi-Platform capabilities - [Windows](#), [Mac](#), [Android](#), [iPhone](#), [iPod](#), [iPad](#), [Kindle](#)

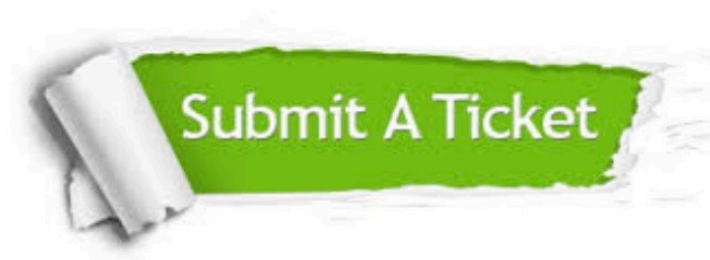
We provide exam PDF and VCE of Cisco, Microsoft, IBM, CompTIA, Oracle and other IT Certifications.
You can view Vendor list of All Certification Exams offered:

<https://www.lead4pass.com/allproducts>

Need Help

Please provide as much detail as possible so we can best assist you.

To update a previously submitted ticket:



 One Year Free Update Free update is available within One Year after your purchase. After One Year, you will get 50% discounts for updating. And we are proud to boast a 24/7 efficient Customer Support system via Email.	 Money Back Guarantee To ensure that you are spending on quality products, we provide 100% money back guarantee for 30 days from the date of purchase.	 Security & Privacy We respect customer privacy. We use McAfee's security service to provide you with utmost security for your personal information & peace of mind.
---	---	--

Any charges made through this site will appear as Global Simulators Limited.

All trademarks are the property of their respective owners.

Copyright © lead4pass, All Rights Reserved.